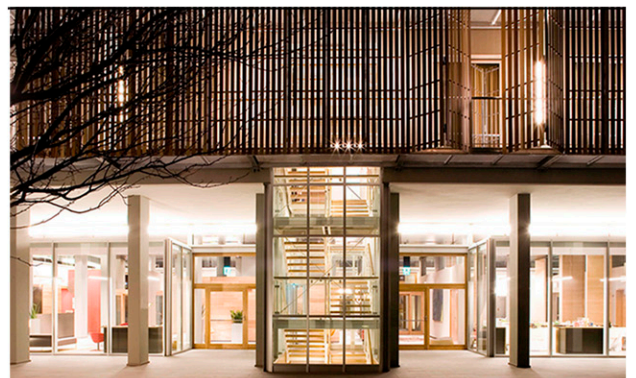


Enrica Mosciaro

Mod 05 Living Hotel

2007 – Sandrà di  
Castelnuovo del Garda

[www.fusina6.com](http://www.fusina6.com)



With the overlap of the two volumes, the hotel is configured as a combination of two buildings, divided almost without “touching” by the long and slender strip of glass. The compact and light upper parallelepiped seems to “float” on the base and its articulation matches its functional complexity.

